

<b>Preparatory work</b> .....	<b>2</b>
<b>Install DB Firewall</b> .....	<b>2</b>
1) Install using User Data method.....	2
1.1) First confirm the format of the JSON setting, such as the following setting parameters (JSON format).....	2
1.2) In the interface for setting up EC2, move to the Advanced Details area, find the User Data input box, modify the above JSON data and paste it into User Data, click the Launch Instance button, and then wait until the EC2 Instance installation is completed.....	3
2) Install using Wizard method.....	4
2.1) Use SSH connection to enter DB Firewall.....	4
2.2) Change permissions to root.....	4
2.3) Execute the datiphy-wizard command to open the setting tool.....	4
2.4.1) Enter the setting tool.....	4
2.4.2) Set DMC connection information.....	5
2.4.3) Display the current IP of DB Firewall.....	5
2.4.4) Select the latest DB Firewall version.....	6
2.4.5) Carry out test procedures.....	6
2.4.6) Select the database type to be monitored (taking MySQL as an example).....	7
2.4.7) Select the database to be configured.....	7
2.4.8) Set the connection information of the monitoring database.....	8
2.4.9) Multiple connection settings can be added/delete for the same database type.....	8
2.4.10) After confirming that the monitoring database information setting is completed, click Next to proceed with the deployment process to complete the setting.....	9
<b>Verify that DB Firewall is installed correctly</b> .....	<b>11</b>

## Prerequisites: Install Data Management Center (DMC)

Please first confirm that Datiphy Data Management Center (DMC) has been ordered from Marketplace and installed.

(At the same time, please also record the IP and admin account password set by DMC first, which will be used later when setting up DB Firewall.)

(DMC product location)

[https://aws.amazon.com/marketplace/pp/prodview-qllepvaykeq6?sr=0-2&ref\\_=beagle&applicationId=AWSMPContessa](https://aws.amazon.com/marketplace/pp/prodview-qllepvaykeq6?sr=0-2&ref_=beagle&applicationId=AWSMPContessa)

After installing the DMC AMI, use a browser to enter [https://\[DMC\\_ip\]](https://[DMC_ip]) will enter the login screen



Datiphy Management Center

User Account \*

Password \*

The default admin account login password for the first time is the EC2 Instance ID where DMC is installed.

Please enter the AWS EC2 management interface first to view the Instance ID.

EC2 > Instances > i-0f4955b8a831aa4a3

**Instance summary for i-0f4955b8a831aa4a3 (DemoDmc)**

Updated 2 minutes ago

Instance ID

 **i-0f4955b8a831aa4a3** DemoDmc)

After successfully logging into DMC, you can go to System → Account to change the admin password.

## Install DB Firewall

Please go to the product page to install  
(DB Firewall product location)

[https://aws.amazon.com/marketplace/pp/prodview-g2kqi6jcawg4k?sr=0-2&ref\\_=beagle&applicationId=AWSMPContessa](https://aws.amazon.com/marketplace/pp/prodview-g2kqi6jcawg4k?sr=0-2&ref_=beagle&applicationId=AWSMPContessa)

There are two ways to install and configure DB Firewall, namely User Data and Wizard.

### 1) Install using User Data method

1.1) First confirm the format of the JSON setting, such as the following setting parameters (JSON format)

```
{
  "DMC": {
    "address": "[DMC_IP]",
    "account": "admin",
    "clearpw": "[DMC_admin_password]"
  },
  "_dbfirewall": {
    "_names": [
      "[DB_Type]"
    ],
    "[DB_Tyep]": {
      "connection": [
        {
          "connect_from_address": "[DB_Firewall_IP]",
          "accept_from_port": [DB_Service_Port],
          "connect_to_address": "[DB_IP or RDS_endpoint]",
          "connect_to_port": [DB_Service_Port]
        }
      ]
    }
  }
}
```

Basically the parameters that need to be entered are as follows

(Please keep the original values of DMC.account and DMC.password. This is the system default value.)

Corresponding parameters	Numeric type	Numeric content
[DMC_IP]	String	Installed DMC product IP location
[DMC_admin_password]	String	Enter the password of the DMC admin account
[DB_Type]	String	Database type, the types that can be set are as follows MySQL / MariaDB / Oracle / MSSQL / Postgre / DB2 / Informix / Sybase / Mongo / AS400 / Http / Netezza / Telnet / Teradata
[DB_Firewall_IP]	String	IP location of the machine where DB Firewall is installed
[DB_Service_Port]	number	The port used by the database service
[DB_IP or RDS_endpoint]	String	The IP address of the database service to be connected or the endpoint of AWS RDS

**1.2) In the interface for setting up EC2, move to the Advanced Details area, find the User Data input box, modify the above JSON data and paste it into User Data, click the Launch Instance button, and then wait until the EC2 Instance installation is completed.**

**User data - optional** | [Info](#)

Upload a file with your user data or enter it in the field.

 **Choose file**

```
{
  "DMC": {
    "address": "10.0.8.35",
    "account": "admin",
    "clearpw": "zcfewfvb"
  },
  "_dbfirewall": {
    "_names": [
      "MySQL"
    ],
    "MySQL": {
      "connection": [
        {
          "connect_from_address": "10.0.8.194",
          "accept_from_port": 3306,

```

User data has already been base64 encoded

## 2) Install using Wizard method

If you do not use the first User Data method to set up the installation, you can use SSH to enter the system after Launch DB Firewall Instance and use the Wizard setting tool to set it up.

### 2.1) Use SSH connection to enter DB Firewall

After installing DB Firewall, please SSH the link to enter DB Firewall. The example is as follows.

```
ssh -i "[user_pem_filename].pem" datiphyuser@[DB_Firewall_IP]
```

### 2.2) Change permissions to root

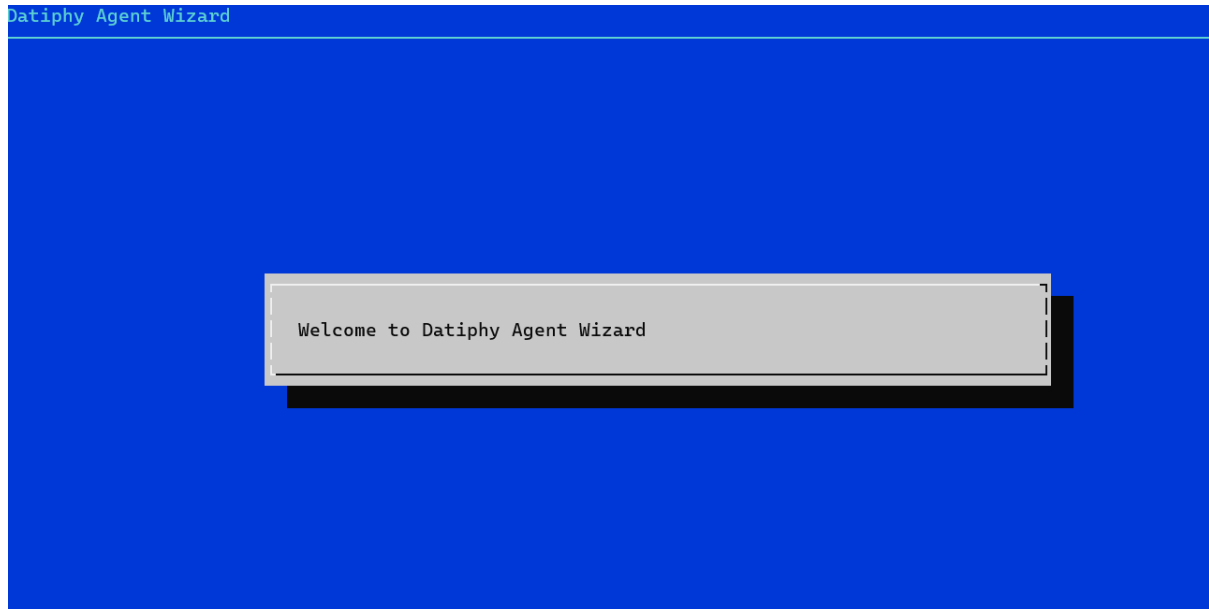
```
sudo bash
```

### 2.3) Execution

The `datiphy-wizard` command opens the configuration tool

```
datiphy-wizard
```

#### 2.4.1) Enter the setting tool



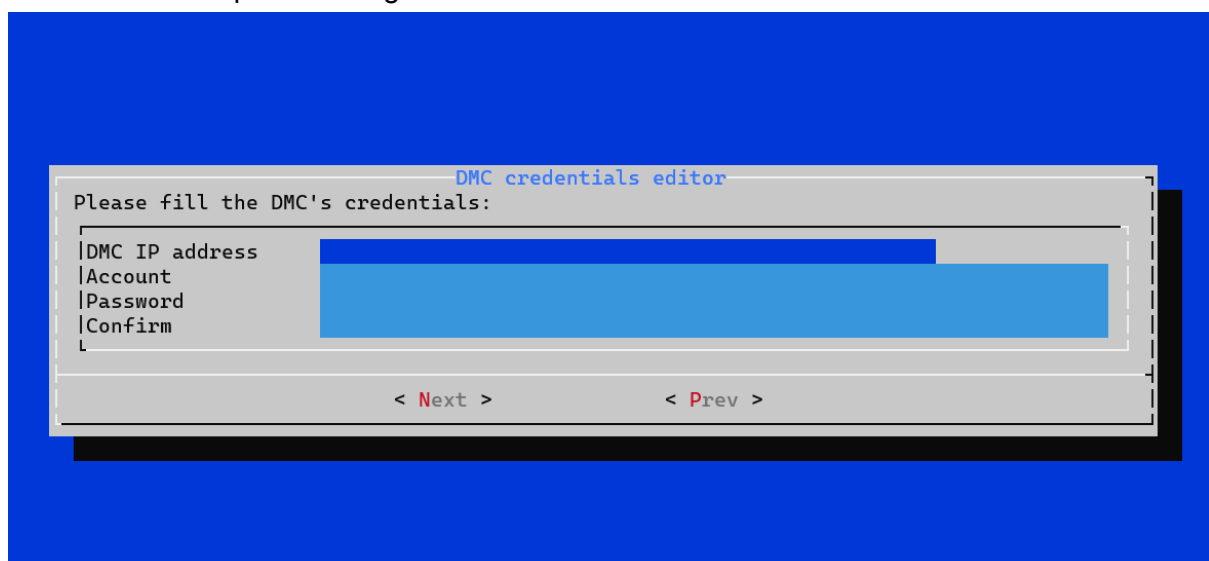
#### 2.4.2) Set DMC connection information

DMC IP address: IP of the machine where DMC is installed

Account: admin (please use the default value)

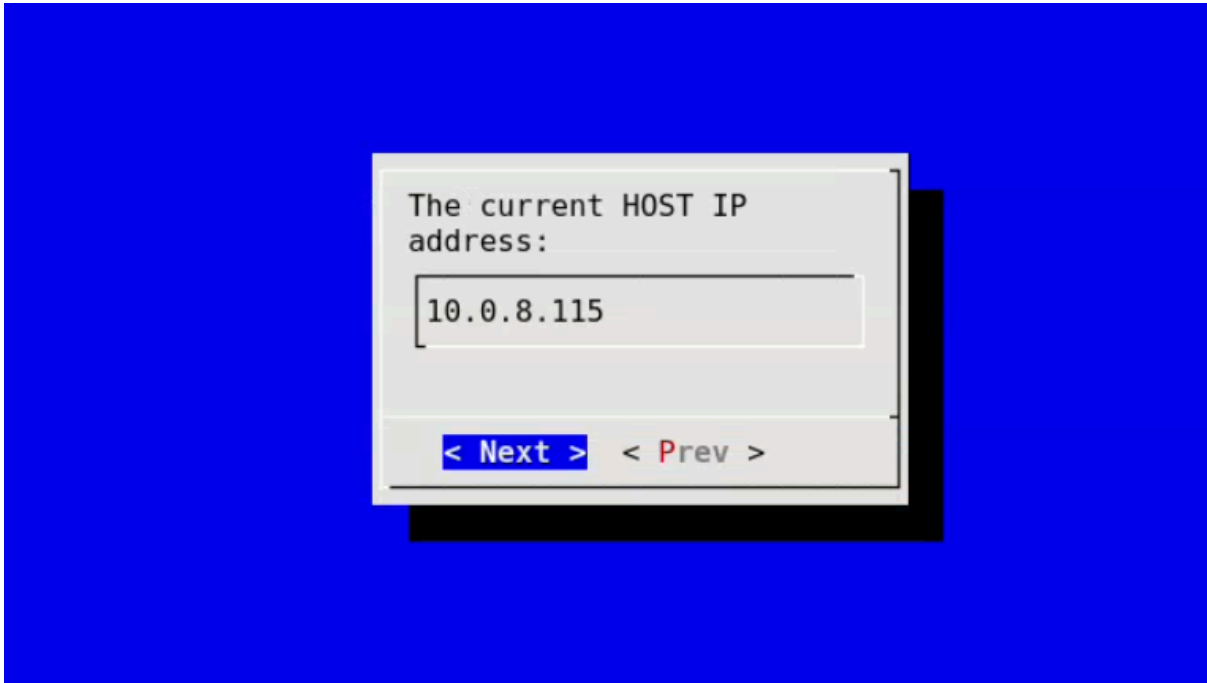
Password: (Please enter the password of the DMC admin account)

Confirm: Confirm password again

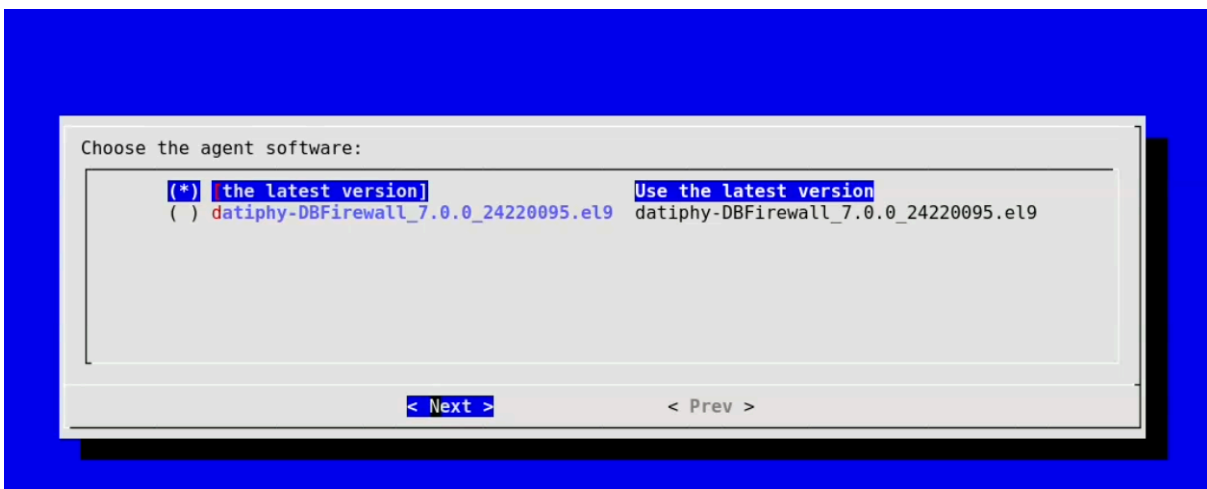


### 2.4.3) Display the current IP of DB Firewall

After entering the DMC connection information, the IP address of the machine where DB Firewall is currently installed will appear for subsequent settings.

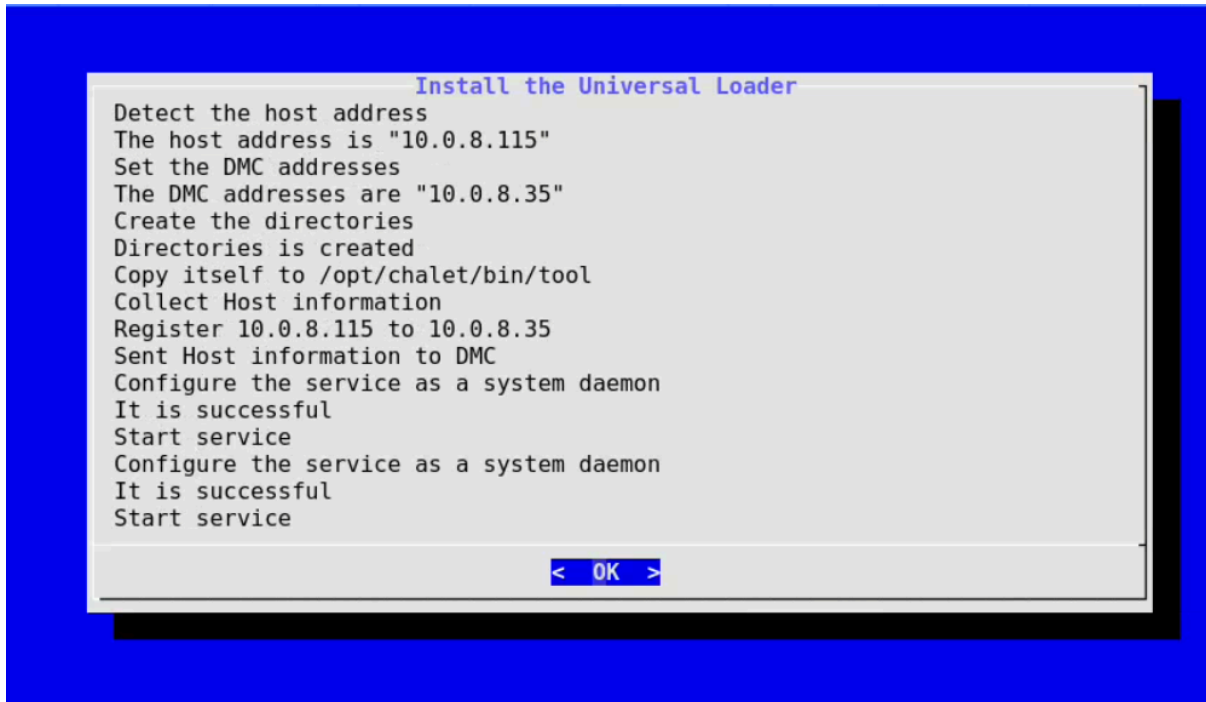


### 2.4.4) Select the latest DB Firewall version



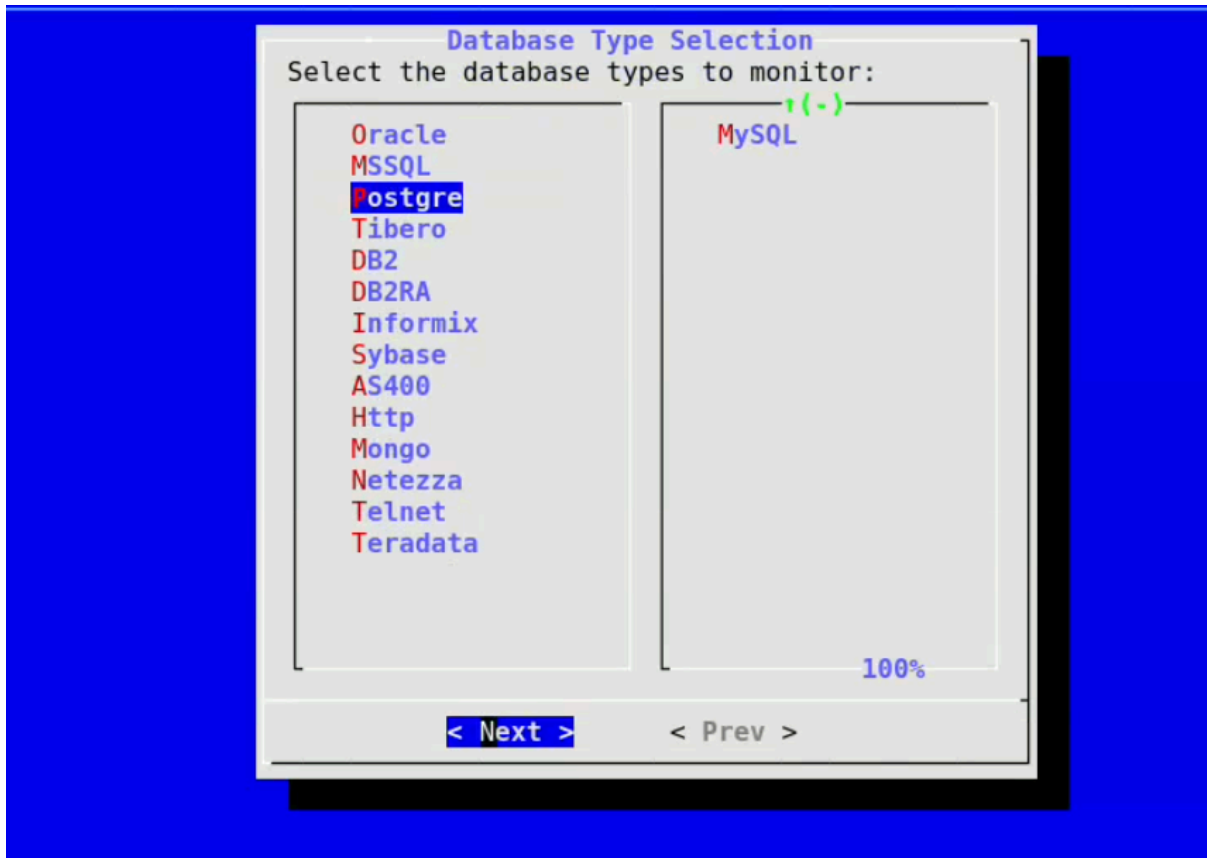
### 2.4.5) Carry out test procedures

At this point, the registration process will begin. If successful, a relevant message will appear. Click OK to set up the monitoring database.

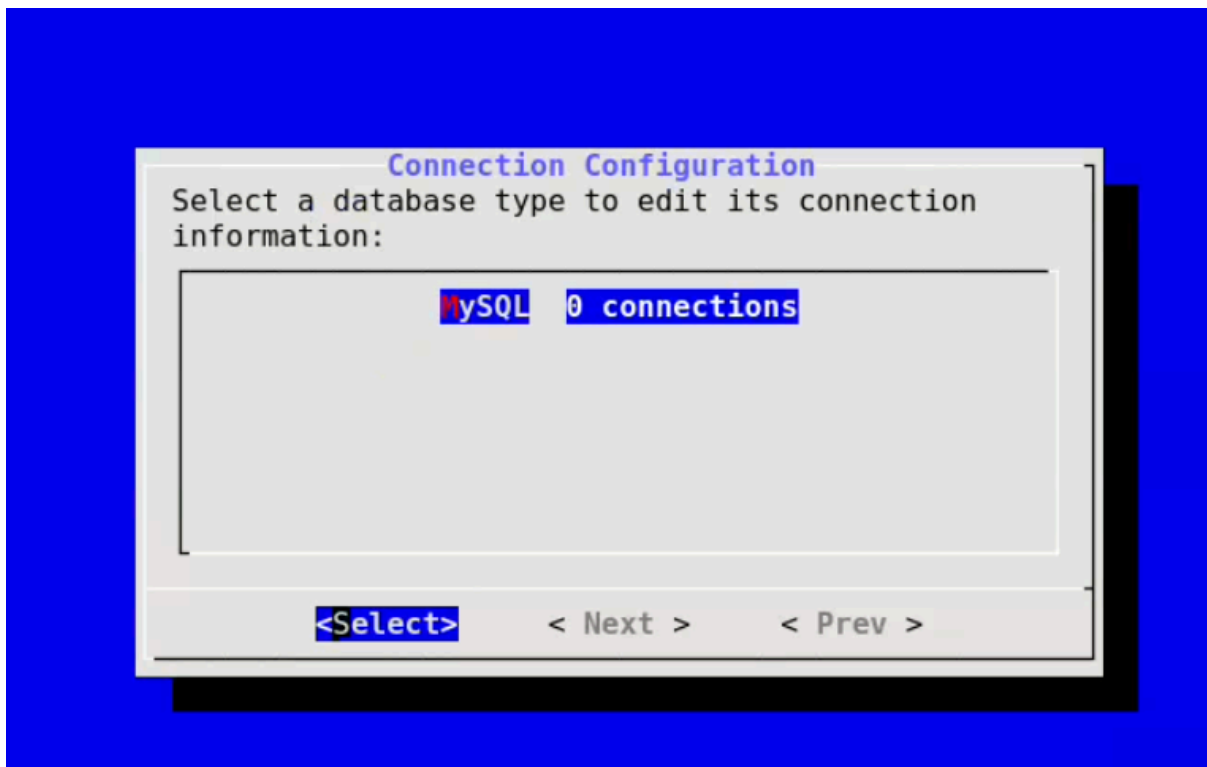




#### 2.4.6) Select the database type to be monitored (taking MySQL as an example)



#### 2.4.7) Select the database to be configured

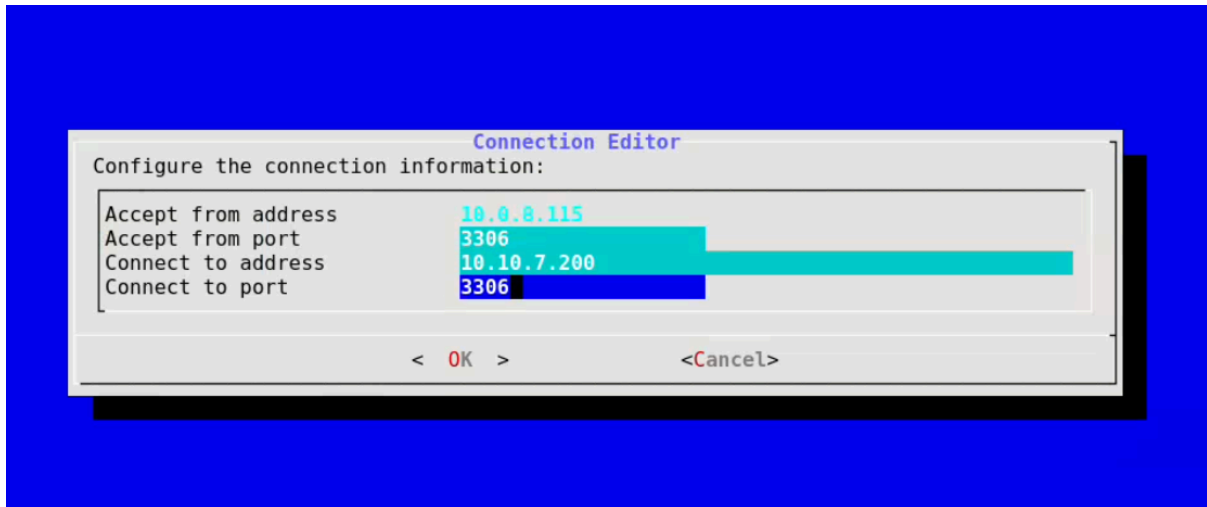


#### 2.4.8) Set the connection information of the monitoring database

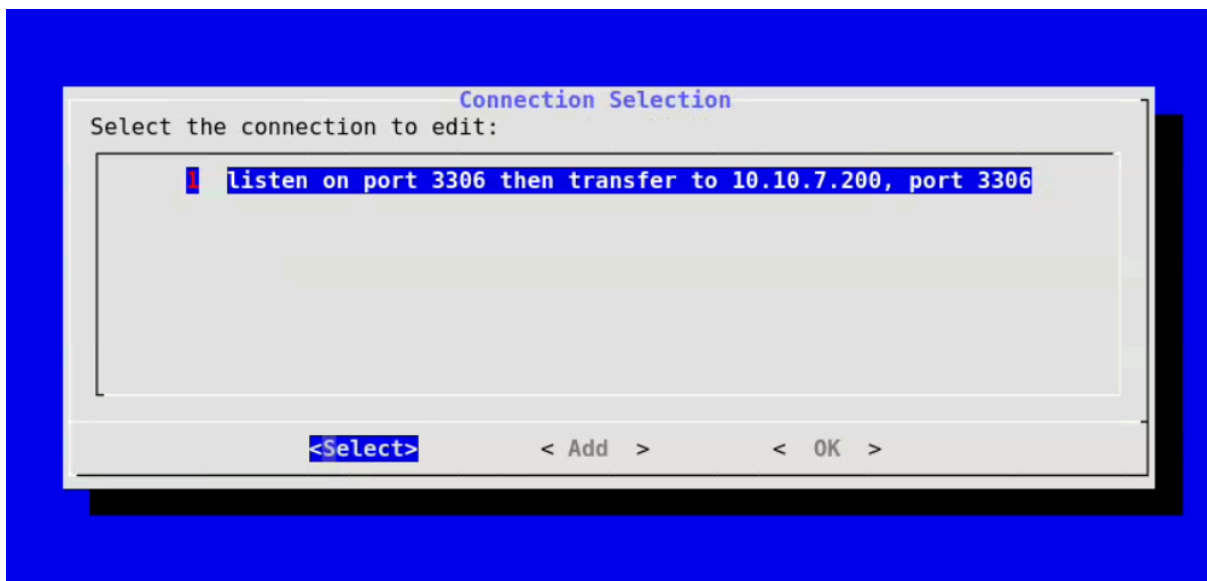
Accept from port: The network port number received by DB Firewall

Connect to address : Database service IP or AWS RDS endpoint to monitor

Connect to port: The database service port number to be monitored

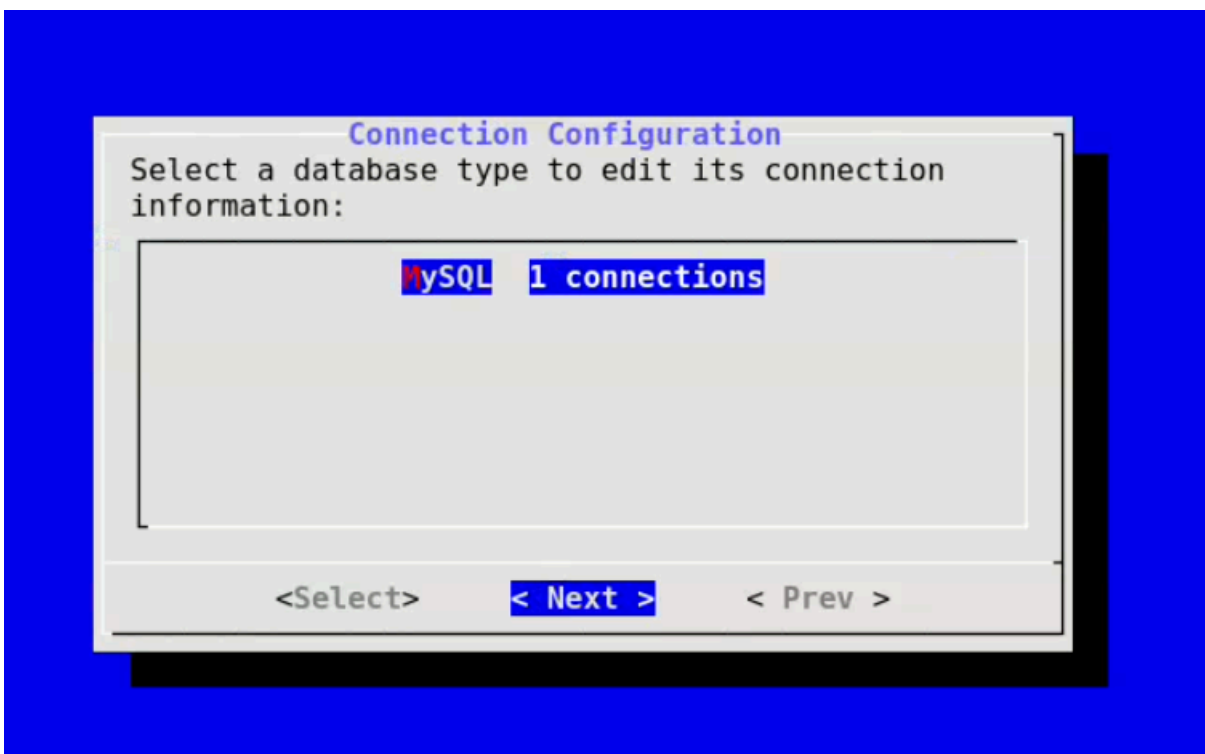


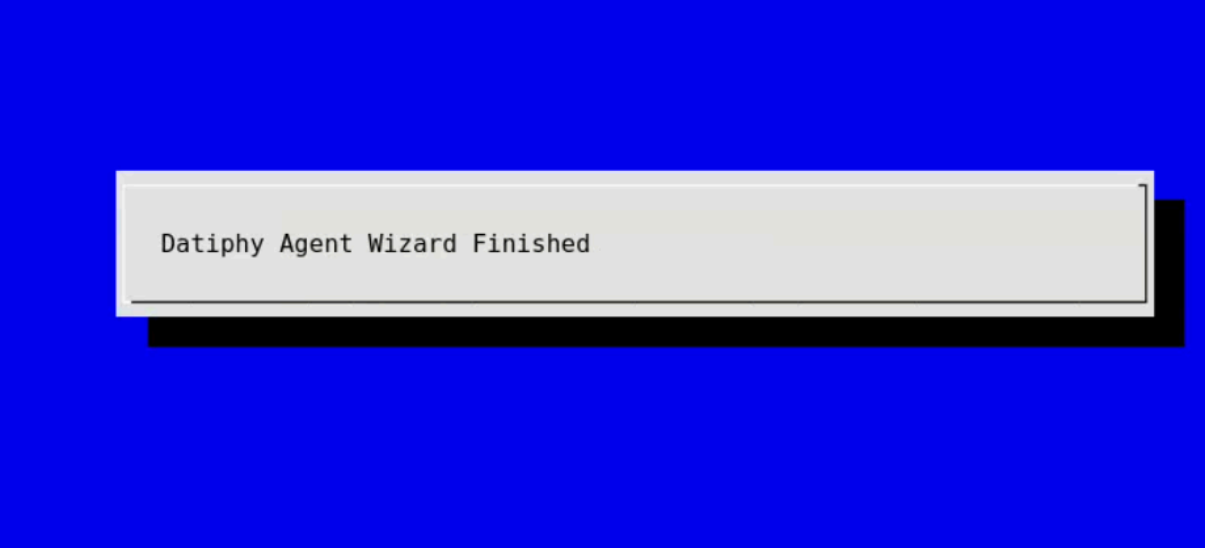
#### 2.4.9) Multiple connection settings can be added/delete for the same database type





2.4.10) After confirming that the monitoring database information setting is completed, click Next to proceed with the deployment process to complete the setting.





Datiphy Agent Wizard Finished

## Verify that DB Firewall is installed correctly

If you want to verify whether the DB Firewall is installed correctly, you can go to the bottom of the Deployment interface of DMC to check whether the installed DB Firewall has been successfully registered, as shown in the example below

The screenshot shows the Dataphy Management Center interface. The left sidebar contains navigation options: Dashboard, Asset Table, Event Viewer, Alert, Template, Deployment, Policy, Report, Search, and System. The main content area displays the 'Agents' section with a search bar and two buttons: 'ADD AGENT' and 'ADD MANAGEMENT'. Below this is a table with the following data:

Operations	Name	Type	Host
	10.0.8.123	dbfirewall	10.0.8.123
	10.0.8.126	dmc	10.0.8.126

If it is confirmed that DB Firewall has been successfully registered on DMC, you can then log in and perform some data operations on the monitored database, and then enter the Asset Table of DMC to check whether database-related object information has been detected.

### Asset Table

The screenshot shows the Asset Table interface with a date range filter: 'FROM 2024-09-02 15:21 TO 2024-09-09 15:21'. The interface is divided into two main sections: System and Client, each with a table of statistics. To the right, there is a 'DB Server - Total' table.

**System**

Type	Total	Active	New	Idle
DB Server	1	1	0	0
DB Client	4	2	0	2
Agent	2	1	0	1
	7	4	0	3

**Client**

Type	Total	Active	New	Idle
App User	0	0	0	0
DB User	1	1	0	0
Client User	1	1	0	0
Client Host	0	0	0	0
Client Program	5	2	0	3
User Behavior	6	3	0	3
	13	7	0	6

**DB Server - Total**  
2024-09-02 15:21 ~ 2024-09-09 15:21

DB Path	DB User	SQL Behavior	NAME/ID	
3	1	36	10.0.10.234	1

100 rows | < < 1-1 of 1 > >|